

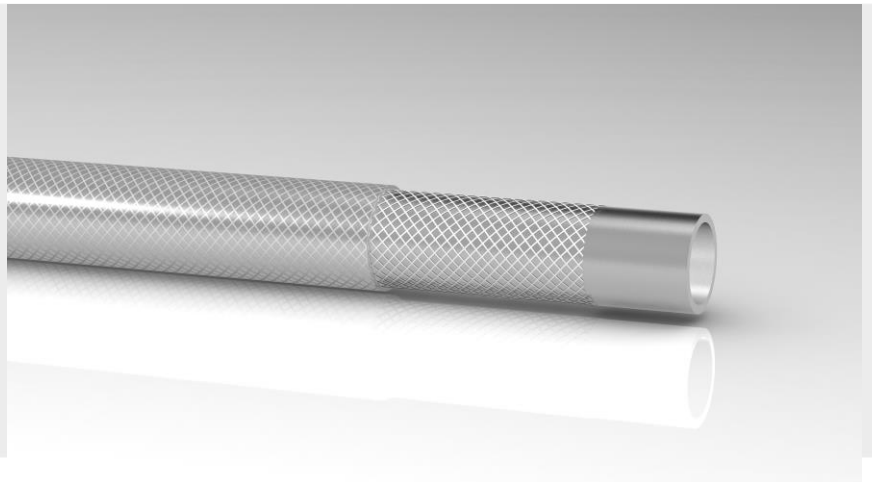

**APPLICATION - ANWENDUNG -  
USO - APPLICATION**

[EN] for conveying fluids, air, powdered foods, salts, light chemicals.

[DE] geeignet als bewässerungsschlauch, zum durchleiten von leichten chemikalien, sowie säuren und laugen.

[ES] para sistemas de limpieza automáticos, indicadores de nivel, aire comprimido, industria alimenticia.

[FR] pour la distribution de l'eau, liquides alimentaires, air comprimé e a la plupart des produits chimiques


**STRUCTURE - AUFBAU -  
ESTRUCTURA - STRUCTURE**

[EN] **Tube:** non-toxic transparent pvc.

**Reinforcement:** high tensile synthetic textile.

**Cover:** abrasion, ozone and weather resistant transparent pvc allowing easy inspection during service.

[DE] **Seele:** toxidenfrei, transparenter pvc.

**Einlagen:** hochfestes synthetisches textildgewebe **Decke:** abriebfester, ozon - und witterungsbeständiger, transparenter pvc..

[ES] **Sustrato:** pvc no-tóxico transparente.

**Refuerzo:** con inserciones textiles con alta resistencia.

**Cobertura:** pvc transparente resistente a la abrasión, ozono y agentes atmosféricos.

[FR] **Tube:** tuyau lisse transparent en pvc, non toxique.

**Renforcement:** insertion textile haute

tenacite. **Revetement:** lisse, transparent resistant a l'abrasion et aux agents atmospheriques.


**RECOMMENDED CLAMP/COLLAR -  
EMPFOHLENE KLAMMER/KRAGEN -  
ABRAZADERA/COLLAR  
RECOMENDADO -  
COLLIER/COLLIER RECOMMANDÉ**







STF – Hose clamps with screw  
SGT – Stepp less



-5°C / +60°C  
+23°F / +140°F



**NORM.:** REG. EU 10/2011, FOR  
SIMULANT TYPE A-B-C, ISO 1307

					
mm	mm	gr/mt	bar	bar	m
5	3,0	81	20	60	100
6	3,0	83	20	60	100
7	3,0	119	20	60	100
8	3,0	117	20	60	100
10	3,0	138	15	45	100
12	3,0	159	10	30	100
13	3,0	169	10	30	100
15	3,0	190	10	30	50
16	3,0	201	10	30	50
19	3,5	280	10	30	50
22	4,0	374	8	24	50
25	4,0	417	8	24	50
30	4,0	490	7	21	50
32	4,5	560	7	21	50
35	5,0	686	7	21	50
38	5,0	743	5	15	50
40	5,0	777	5	15	50
45	5,0	840	5	15	50
50	5,0	949	5	15	50